

# WHIP CITY TOOL & DIE CORPORATION

Serving Industry Nationwide Since 1957

*Quality parts, tools and dies  
Specializing in Verti-slide  
& Fourslide Machines*



# WHIP CITY TOOL & DIE CORPORATION

Serving Industry Nationwide Since 1957

For over 45 years, Whip City Tool & Die Corporation has been known for quality, versatility, integrity, and personal service. Exceeding our customer's expectations is our goal, second only to quality.

Whip City Tool & Die Corporation understands every quality part begins with teamwork between our customers, suppliers and workers. To ensure quality, WCT has a vigorous inspection process; our employees follow written procedures and document inspections.

To alleviate downtime, material is only purchased from approved suppliers who can meet our strict standards. From the time raw material enters our Shipping & Receiving Dept. quality carries through to final shipments.

Boxes are barcode labeled for easy identification of part numbers, quantities, customer order numbers and job numbers. In addition, all production parts are boxed, cornered and banded to skids safeguarding fragile parts from damage during shipping.

ISO 9001:2000 certified, we are committed to continuous improvement, through all aspects of business, including on-going education and training.

Whip City Tool & Die Corporation works closely with our customers, making every effort to fully understand their product. We take personal interest by traveling to our customers' plants to ensure tooling, made by WCT, produces only quality production parts.

It is interesting that tooling or metal stampings, made by WCT, when assembled, make products that are used daily by consumers. The importance and seriousness of our work becomes apparent when looking around a room or driving in a car. Teamwork made all the intricate parts assemble to produce something spectacular. We take pride knowing that Whip City Tool & Die Corporation played a part.

*We welcome the opportunity to serve you!*

**ISO 9001:2000  
CERTIFIED**



813 College Highway P.O. Box 99 Southwick, MA 01077-0099  
(800)905-7909 PH (413)569-5528 FAX (413)569-0494



## Tool & Die Makers

Tool & Die Makers produce tools, dies and special guiding and holding devices that enable machines to manufacture a variety of products.

Toolmakers craft precision tools that are used to cut, shape and form materials.

Die makers construct metal forms (dies) that are used to shape metal stampings.

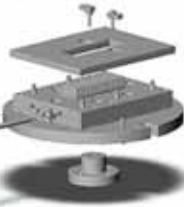
In addition to developing and producing new tools and dies, these workers also repair worn and damaged tools, dies, gauges, jigs and fixtures.



## CAD, CAM and CNC

Designers use computer-aided design (CAD) to design tooling for our customer's products. CNC toolmakers use computer-aided manufacturing (CAM) programs, which convert electronic drawings into computer programs that contain a sequence of cutting tool operations. Once these programs are developed, computer numerically controlled (CNC) machines follow the program to produce die sets and other components.

Whip City Tool & Die Corporation is continually updating its Design Department which is currently running Solidworks 2001plus, Autocad R14 and Autocad 2001, Camnetics Cam Trax and Camnetics Gear Trax SE. These design programs provide WCT the capability to design our customer's product in a cost-effective method.



## Verti-slides

No other wire and strip-forming machine can match the fourslide in versatility and efficiency. Verti-slides perform intricate operations, such as welding, tapping and assembly.

Verti-slides produce precision parts at extremely close tolerances at extremely high speeds which cut production time and costs by eliminating secondary operations.



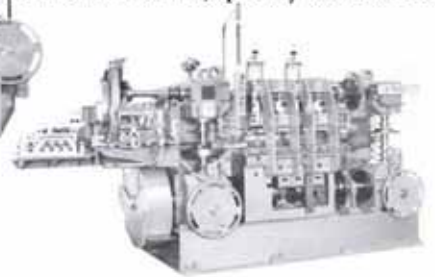
Torin V-81



Torin V-82



Torin V-825



Torin V-83

## Parts Washing and Deburring

In another effort to cut costs and eliminate subcontracting for secondary operations, Whip City Tool & Die Corp. offers parts washing and deburring.

Handling during part assembly and or/ different applications cannot be performed on "dirty" oily parts. Parts are cleaned (oil-free and lubricant-free) when required by our customers. Parts are deburred for different purposes. Some parts are deburred for pre-plate finishing, others are for luster, brighten or clean and, of course, for burr removal.



## EDI (Electronic Data Interchange)

Whip City Tool & Die Corporation is set-up to use EDI with customers who require a paperless system for order forms, invoices, bill of lading and a variety of documents containing specific or crucial data.

Visit our website at [www.whipcitytool.com](http://www.whipcitytool.com)